

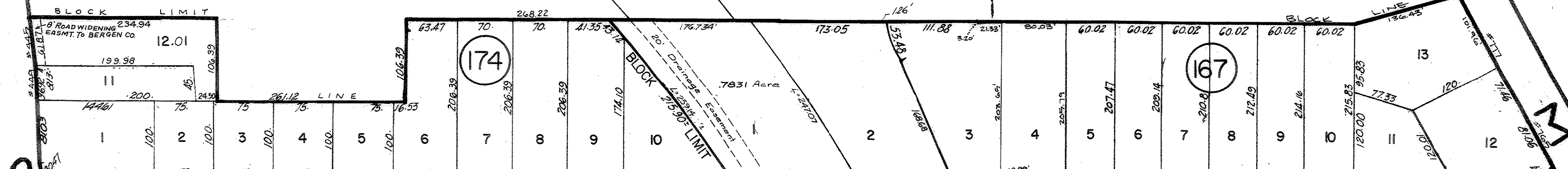
SEE PLATE #17

SEE PLATE #10

SEE

#20

HAZELHURST AVENUE



GLEN AVENUE

GLEN AVE.

ROAD

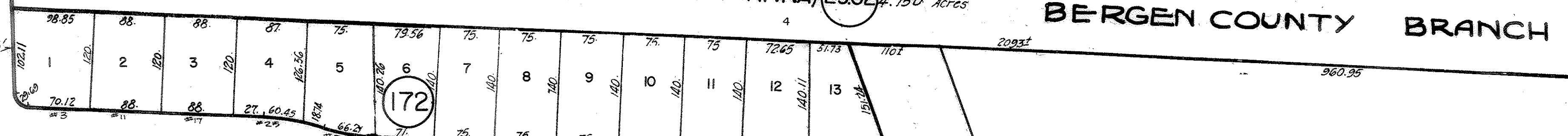
SEE

WEST PLAZA

PLATE

CONRAIL (FORMERLY ERIE LACKAWANNA) 2902.750 Acres  
BERGEN COUNTY BRANCH CLASS I

PLATE



STONEFIELD ROAD

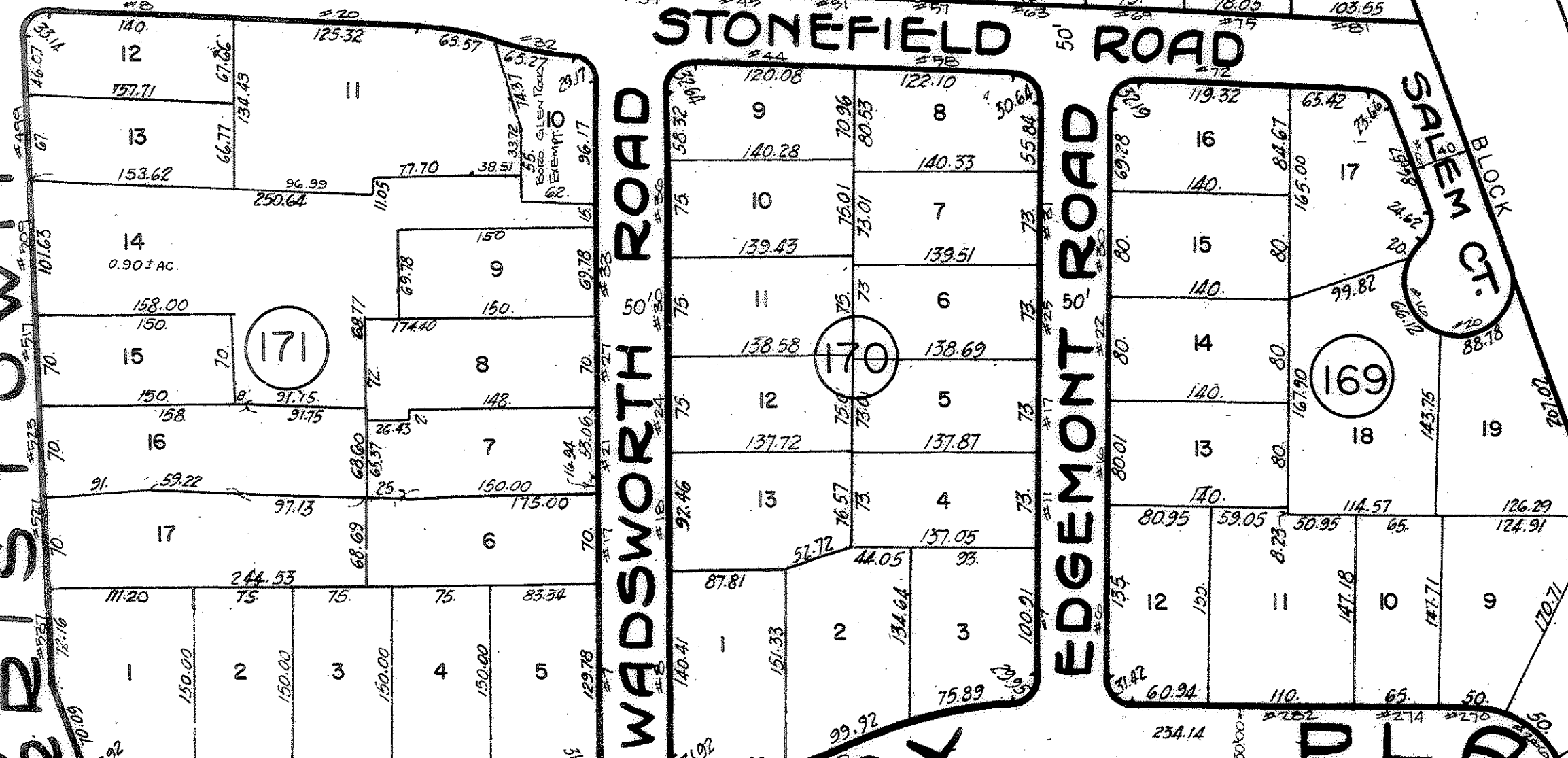
165

BOROUGH OF GLEN ROCK MEMORIAL PARK  
11.376 Acres EXEMPTED

BELVIDERE ROAD

SEE

ROAD



WADSWORTH ROAD

EDGEMONT ROAD

SALEM C.T. BLOCK

BOROUGH OF GLEN ROCK  
5.702 ACRES EXEMPTED

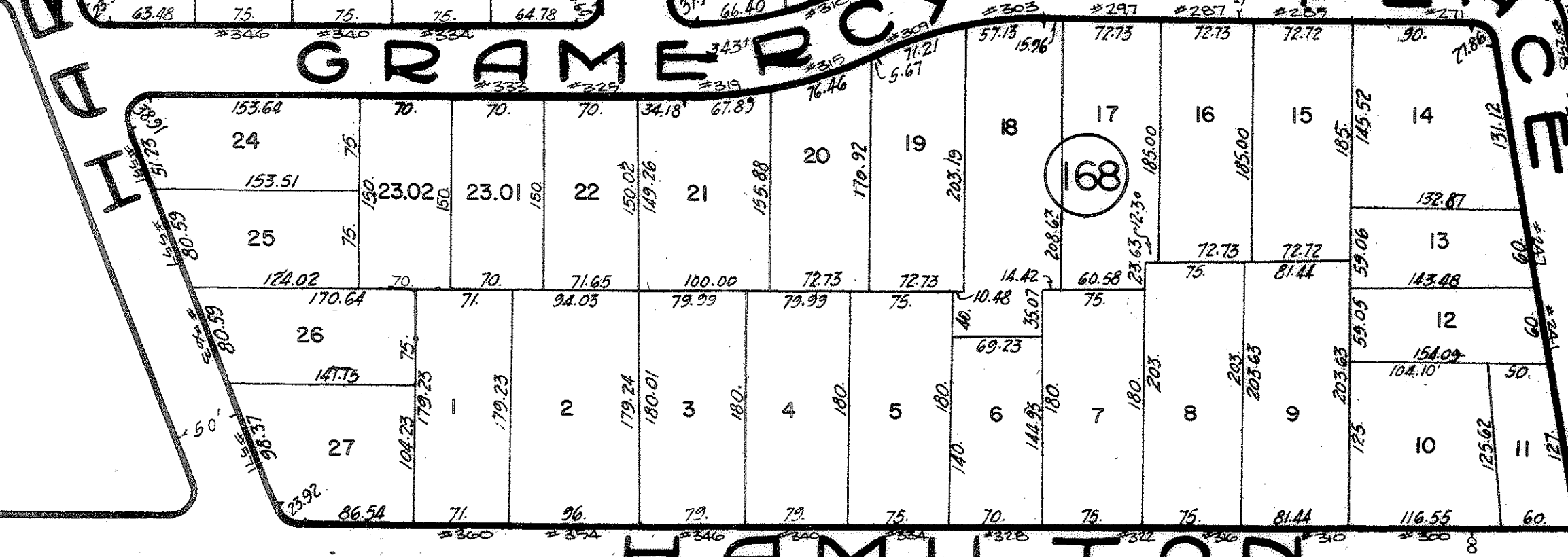
RADBURN ROAD

GRAMERCY PLAZA

ABBINGTON TERRACE

SEE PLATE

#21



HAMILTON AVENUE

164

CLINTON PL.

163

SEE

PLATE

#15

EMERSON ROAD

GRAMERCY PLACE

TAX MAP  
BOROUGH OF GLEN ROCK  
BERGEN COUNTY NEW JERSEY  
SCALE 1" = 100' MARCH 1, 1932  
FRANK M. EVANS  
96 RODNEY STREET  
GLEN ROCK, N. J.